

MAIDSTONE ROAD
NORWICH NR1
GUIDE £180,000

abbotFox presents this investment opportunity, situated in the centre of Norwich. With tenants currently in situ, this two bedroom, modern ground floor apartment will provide an instant income for any investment buyer. With the property maintained to a good standard throughout an internal viewing comes highly recommended.

Bedrooms 2

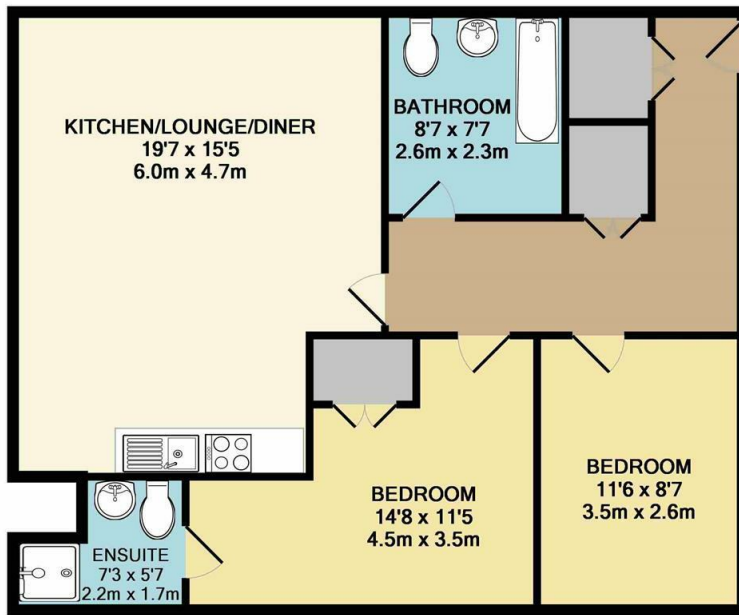
Receptions 1

Bathrooms 2



Would you like your property valued?
 Call 01603 660000 or visit abbotFox.co.uk for an instant valuation

FLOOR PLAN



TOTAL APPROX. FLOOR AREA 755 SQ.FT. (70.2 SQ.M.)

Whilst every attempt has been made to ensure the accuracy of the floor plan contained here, measurements of doors, windows, rooms and any other items are approximate and no responsibility is taken for any error, omission, or mis-statement. This plan is for illustrative purposes only and should be used as such by any prospective purchaser. The services, systems and appliances shown have not been tested and no guarantee as to their operability or efficiency can be given
 Made with Metropix ©2018

EPC

Energy Efficiency Rating		Current	Potential
Very energy efficient - lower running costs			
(92 plus) A			
(81-91) B			
(69-80) C			
(55-68) D		51	53
(39-54) E			
(21-38) F			
(1-20) G			
Not energy efficient - higher running costs			
England & Wales		EU Directive 2002/91/EC	

Environmental Impact (CO ₂) Rating		Current	Potential
Very environmentally friendly - lower CO ₂ emissions			
(92 plus) A			
(81-91) B			
(69-80) C			
(55-68) D		56	57
(39-54) E			
(21-38) F			
(1-20) G			
Not environmentally friendly - higher CO ₂ emissions			
England & Wales		EU Directive 2002/91/EC	

MAP



Disclaimer – In accordance with the Property Misdescriptions Act, the company gives notice that all descriptions, references to condition, necessary permissions for use and other details are given in good faith and believed to be correct, but any intending lessees do not rely on them as statements of fact, but must satisfy themselves by inspection or other means, as to their accuracy.